

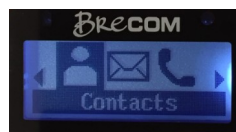
# Brecom VR-2500

## Velg Gruppe/Lag (Lag 01-20)

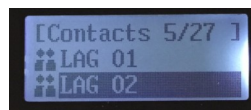
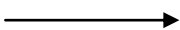
Trykk Menu tast



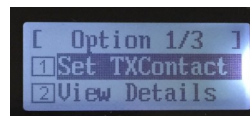
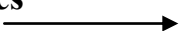
Velg Contacts  
Trykk Menu



Trykk pil ned til  
feks "Gruppe/lag 02"  
Trykk Menu



"Set TX Contacts" utheves  
Trykk Menu tast  
"Set success" vises og du er  
nå i "gruppe/lag 02"



Trykk Rød tast for å avslutte

